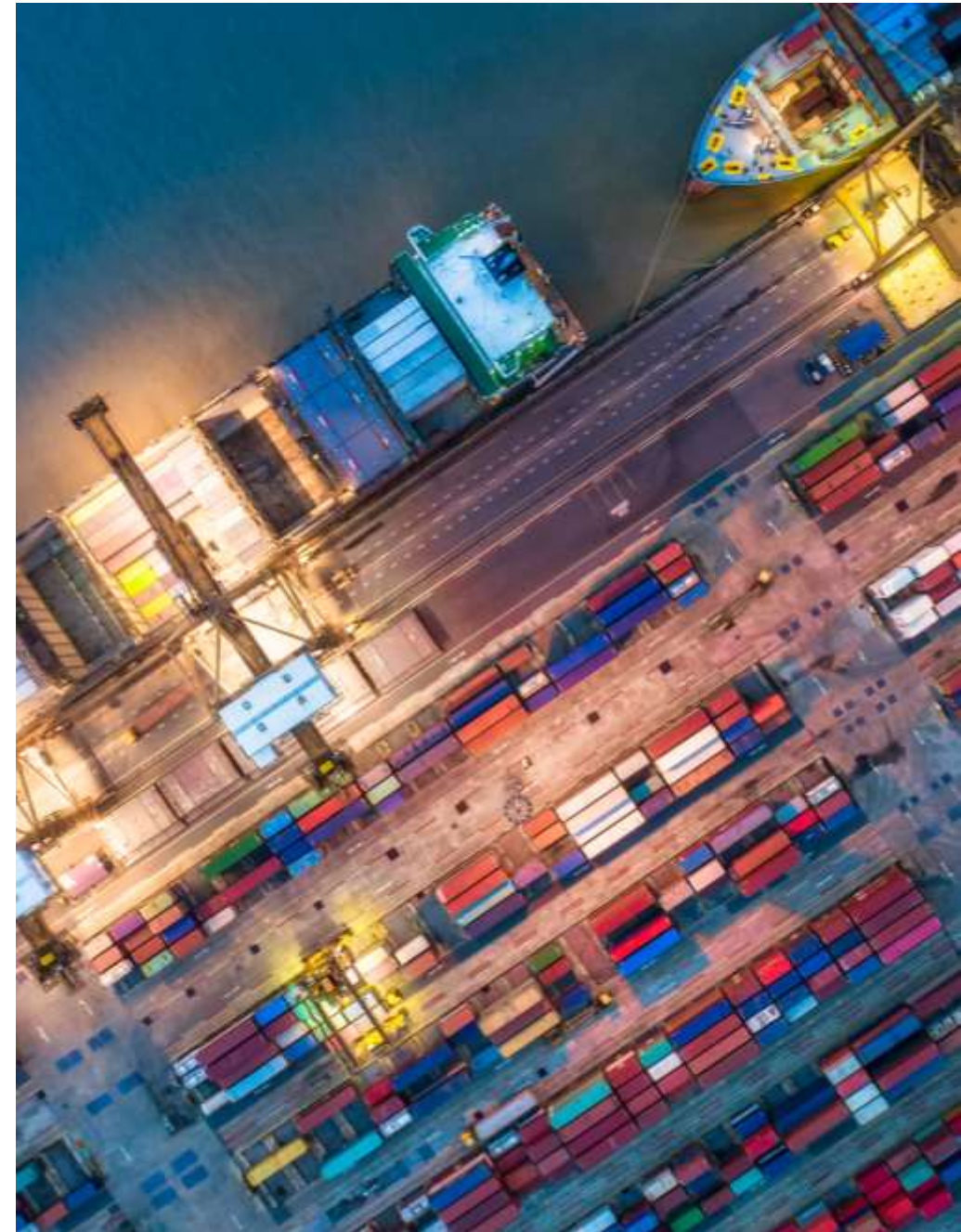


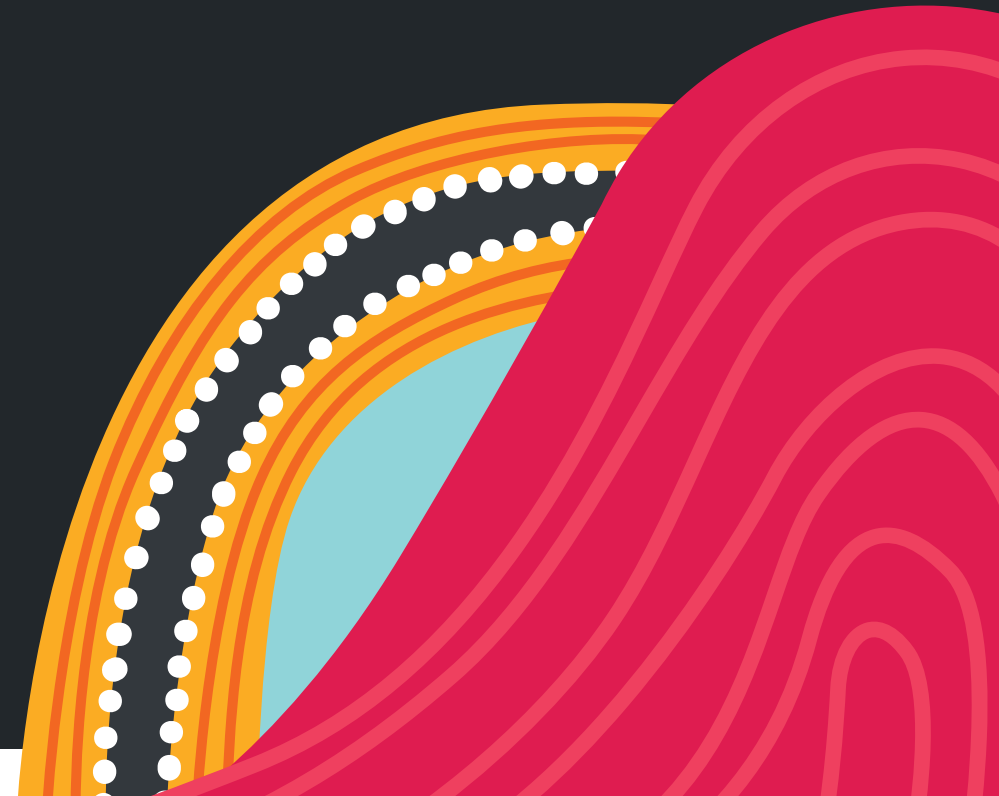
Freight Regional Forum

GRIFFITH



WELCOME TO COUNTRY

Vickie Simpson



Welcome

Bianca Slack-Smith,
Director, Policy and Regulatory Reform, Freight
Transport for NSW



Introduction

Cr Doug Curran, Mayor of Griffith



The Hon. Sam Farroway, MLC

Minister for Regional Transport and Roads



Bianca Slack-Smith

Director Policy and Regulatory Reform, Freight
Transport for NSW



Freight's importance to regional NSW



Regional NSW accounts for **20 per cent** of NSW's Gross State Product and **33 per cent** of goods manufactured in NSW



Approximately **39 per cent** of the value of NSW's exports is derived from agricultural, fisheries and other natural resources primarily sourced from Regional NSW

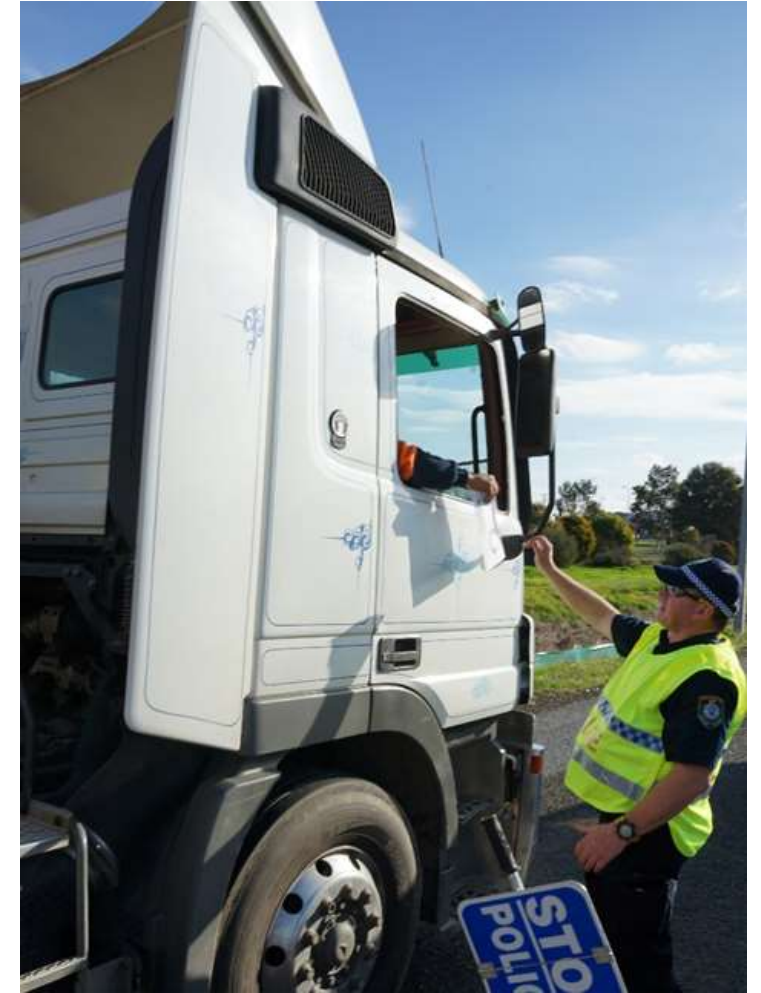


Regional NSW's freight task is forecast to grow by around **12 per cent** by 2036 – from 255 million tonnes to 286 million tonnes



Enabling the movement of freight across NSW

- **Improved access** for higher productivity vehicles
- Engagement with industry during **emergency events**
- Maintained movement of goods through **COVID**
- Key contributor to the **Heavy Vehicle National Law Review**
- Improving our service offering for **rail**
- **Rail freight level of service** and **KPI's** on the Metropolitan Rail Network
- **Last mile toolkit** for urban freight



Achieving a step change in access

- A **dramatic improvement** in access for road and rail freight
- Gaining **the most out** of the road and rail network
- Better **certainty** for industry
- Improving the **customer service**
- Improved customer experience in the safety, productivity and sustainability of freight





Safe



Productive



Sustainable

Mode	Policy framework	Program
	Heavy Vehicle Access Policy	Automated Access Assessment Program
	Standard Track Access Agreement	Freight Level of Service for Rail Freight

Other priority areas

- Heavy Vehicle Driver pathways
- Net Zero freight emissions policy
- Rest stop improvement program
- Cohesive rail freight policy
- Network wide constraints mapping to inform investment prioritisation
- Leveraging technology and data.



Sam Knight

Regional Director – South
Transport for NSW



South Region overview



2022-2023 Financial Year

- Capex budget \$696 million
- Opex budget \$509 million

Projects

- 1218 active projects



33 Local Government Areas

Key projects:

- Princes Highway Upgrade
- Barton Highway Upgrade
- Picton Road Upgrade
- Mount Ousley interchange
- Murray River Crossings
- Nowra Bridge replacement

Flood recovery and maintenance

Transport continues to prioritise responding to priority flood damage across the State road network, including heavy patching and road repairs across the region.

Since February 2022:

- **29,695** potholes have been repaired in South Region
- Almost **4,180** potholes have been filled on the **Sturt Highway** between **Balranald LGA** and the **Hume Highway**
- Almost **4,410** potholes have been filled on the **Hume Highway** from **Albury LGA** to **Wollondilly LGA**



More than

135,000

potholes repaired across NSW
since February 2022



North Kooba Settlers Road bridge replacement

Kidman Way, Hanwood



Start of work: Late 2023 TBC

Completion date: Mid 2025 TBC

Funding: Australian Government Bridge Renewal Program & NSW Government TBC

Project includes:

- Replacing Benerembah Channel crossing to **improve safety and efficiency.**
- **Safety improvements** at Kidman Way intersections with North Kooba Settlers, Pellizer, Waide and Marston roads.

Benefits:

- Wider and stronger to **safely carry heavy vehicles.**
- Improved **visibility.**

Griffith Southern Industrial Link Road



Project update:

- Construction of a roundabout at the Thorne Road and Kidman Way intersection has been completed.
- Construction and sealing work at Bromley Road is under way

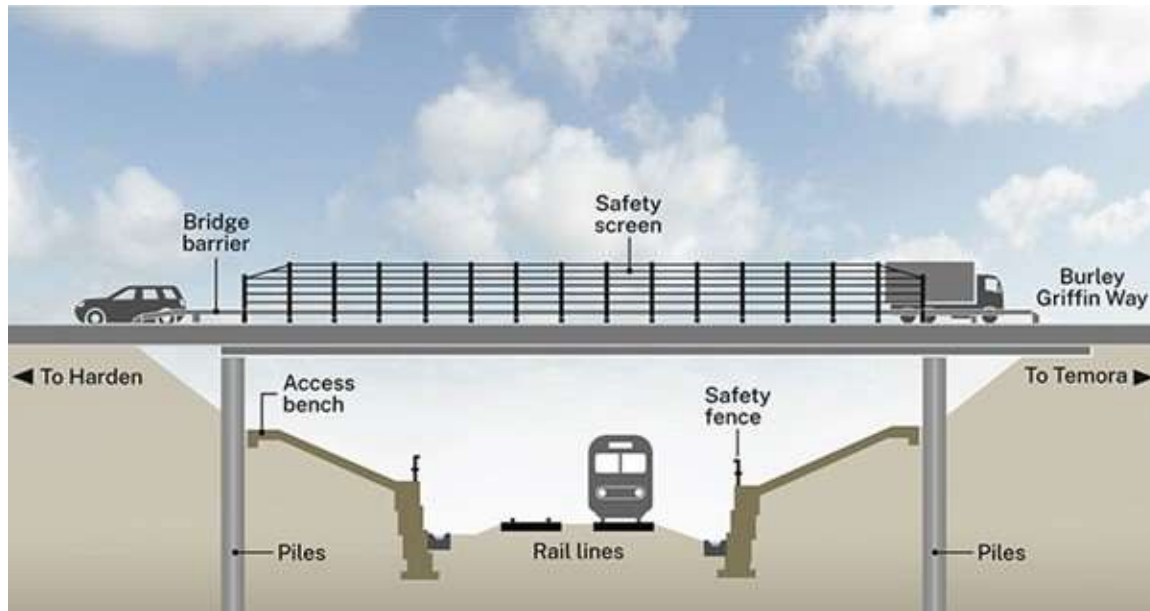
Benefits:

- Heavy vehicle bypass is improving productivity and safety outcomes of heavy vehicle operations through and around Griffith.

Wallendbeen Bridge

Burley Griffin Way, Wallendbeen

Start of work: TBC



Project includes:

- **Replacing railway crossing bridge** on Burley Griffin Way.
- Realigning Burley Griffin Way to **remove two curves.**
- **Safety improvements** at Burley Griffin Way intersections with Morrissons Hill, Silo and North Jindalee roads.

Benefits:

- Wider and stronger bridge to **safely carry heavy vehicles.**
- **Improve travel times** with restoration of two-way lanes.

Junee to Griffith rail upgrade



Completion date: January 2022

Funding: \$60.4 million – NSW Government Fixing Country Rail Program

Project included:

- **Replacing 174 kilometres of rail** between Junee and Griffith.

Benefits:

- **Heavier freight trains** can use the track due to 25 TAL (tonne axle limit) rating.
- **More efficient freight movements** with trains able to carry more, and in some cases, **faster**.

Coolamon Siding extension

Early works start date: September 2022

Completion date: Mid 2023 TBC

Funding: \$11.7 million – NSW Government Fixing Country Rail Program

Project includes:

- Extending the Coolamon Siding

Benefits:

- **Alleviate bottlenecks and congestion** on the single line track between Junee and Griffith.
- Allow access for modern freight trains up to 1500 metres long to exit the main line, **enabling passenger and freight services to pass.**



Junee North Fork (Triangle)



Project includes:

- Reinstatement of the North Fork of the Junee Triangle to re-establish the northern connection between the Main South and the Junee to Griffith rail lines.

Project benefit:

- Prevent freight trains travelling to the Sydney metropolitan area, Port Botany or Port Kembla, needing to enter Junee yard to perform a run around (shunt) movement to proceed north.

Project update:

- 2019 – Strategic business case completed.
- 2022 – Detailed design work completed.

Grade Separating Road Interfaces Program

Funding: \$562.5 million – Australian & NSW Governments

- This project aims to **improve freight connectivity and access** on the NSW Classified road network by **building road bridges over the Inland Rail corridor**.
- There are **22** sites being assessed with four priority locations for grade separation currently being developed, including **Olympic Highway at Harris Gates, near Illabo**.
- **Planning** for the remaining **18** sites has started with strategic investigations occurring to prioritise each site.



Wumbulgal Siding

Detailed design complete: Early 2023 TBC



Project update:

- Currently in detailed design

Benefits:

- Crossing capacity for services up to 1500 metres long between Coolamon and Griffith.
- Provision for **potential private sidings connections**.
- Increase in freight and passenger **pathing capacity** between Junee and Griffith.
- **Greater reliability** for passenger services.

Griffith Integrated Transport Plan

Guide to transport planning over the next 10 years

- **Investigating improvements** to the transport network in and around Griffith.
- Ultimate aim is to deliver a **high performing, well-integrated** and **efficient** transport network that meets customers' needs.
- **Community consultation** to start this month to identify a range of actions that Transport, Griffith City Council and other key stakeholders can implement to make Griffith a better place to live, work and visit.



Adam Gray

A/ Director planning, South
Transport for NSW



Integrated Freight Planning



Fixing Country Roads

Status at 18 Oct 2022

- Round 6 of Fixing Country Roads submissions now under assessment
- Successful projects to be announced by the end of 2022
- To date, \$462.3 million, has been committed to 323 projects, with 269 projects delivered with another 53 projects in delivery pipeline
- Completion of all current projects is expected to deliver over 1800 kilometres of upgraded road and over 200 bridges and culverts upgraded or constructed.



Road freight planning

Beyond Fixing Country Roads

- Planning has recently commenced for the next phase beyond Fixing Country Roads
- Priority problems, review desired outcomes



Road planning priorities

GRIFFITH

- Hume Highway HPV Access Improvements SBC
- Hume Highway - Sheahan Bridge - Gundagai
- Hume Highway / Annie Pyers Drive Intersection
- Maldon-Dombarton Feasibility Investigations
- Princes Highway freight access improvements
- Macquarie Pass Feasibility Study
- North Wagga Wagga Network Improvements



Rest stop planning



Heavy Vehicle Rest Stop Quick Wins Program

A series of low-cost small projects to deliver initial benefits:

- Industry engagement took place between September 2021 and April 2022
- Lighting, toilets, picnic benches
- Green reflector sites mapping and checking status
- Better signage for rest stops and a trial for tonnage restricted parking signage



Heavy vehicle rest stop improvement program

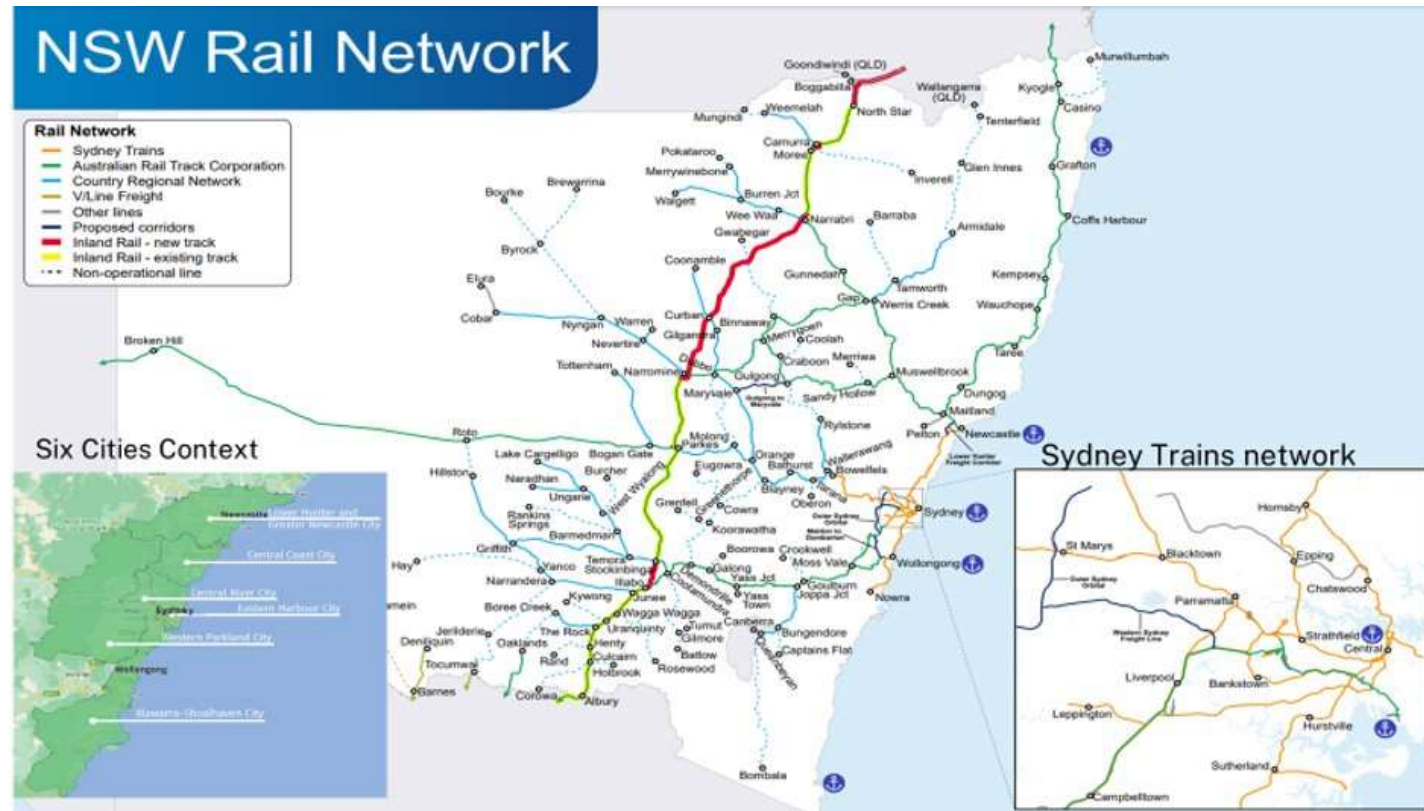
Early analysis has been completed

- Considered improvements to both formal and informal rest stops,
- Austroads - Provision of HVRS Facilities Guidelines 2019
- Identified gaps in the network and where new provisions may be required
- Upgrades to existing rest stop facilities for heavy vehicles, including high productivity vehicles
- Better signage and maps for rest stops
- Stakeholder engagement to validate the research and inform the scope and type of rest stops and improvements required - 1st round completed.



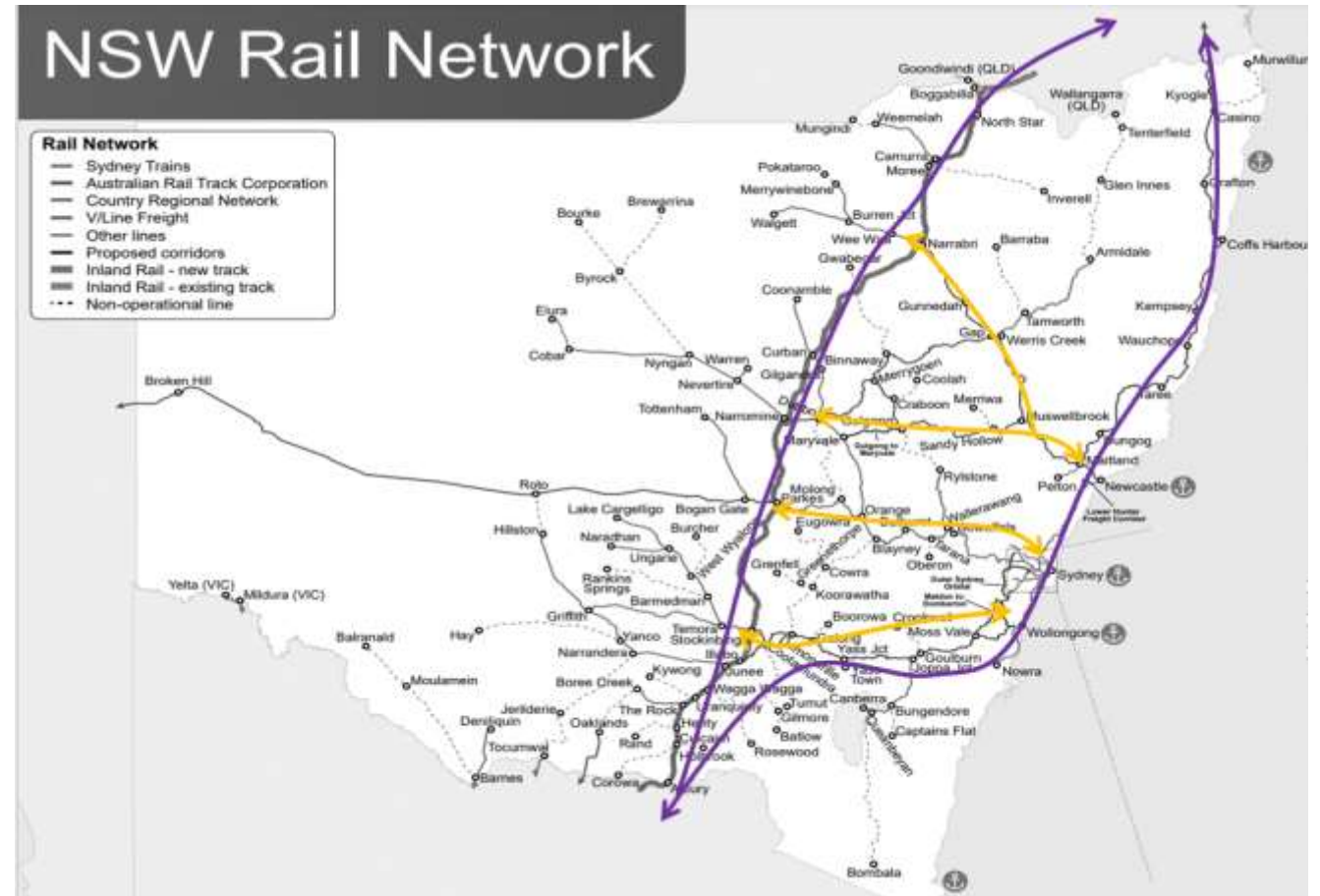
Rail freight planning

- Fixing Country Rail in final stages (Country Rail Network)
- TfNSW turning to next cycle of planning
- CRN and inter-related networks
- Freight industry needs and expectations for the future
- What are the new needs and future forecasts for rail freight and local regional communities?



Rail freight planning

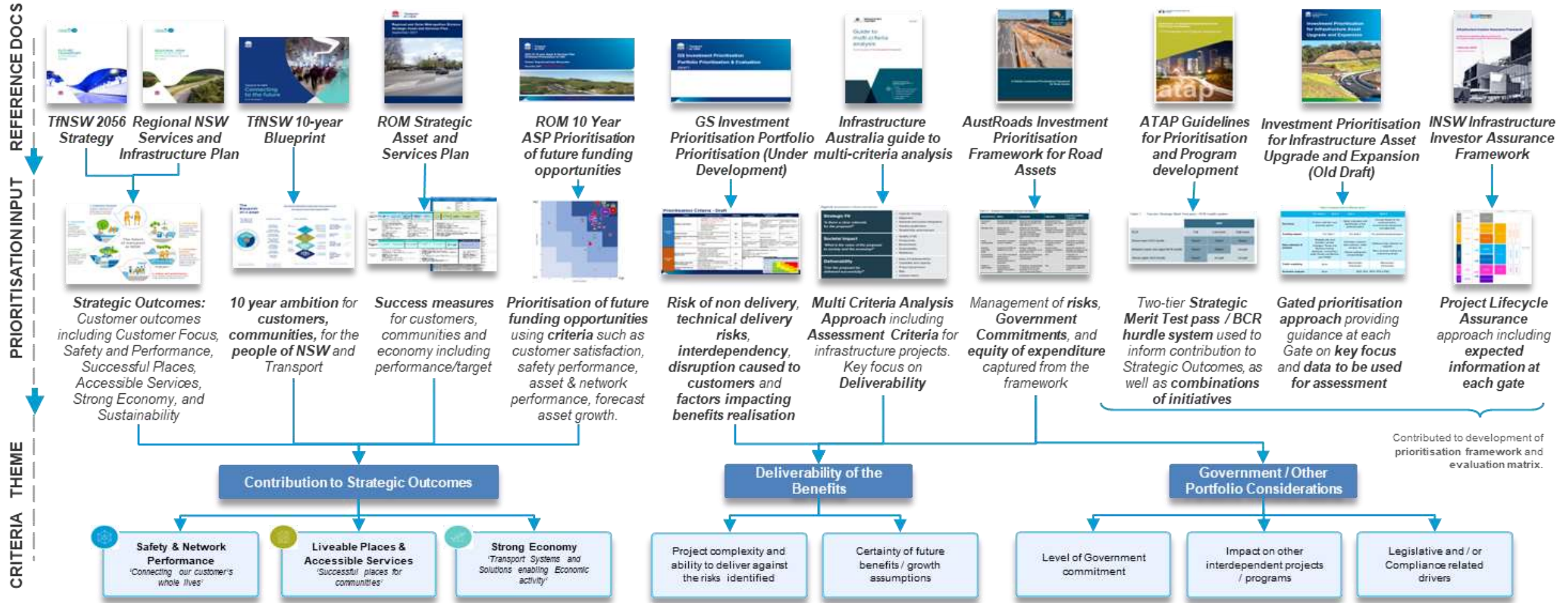
- Weather patterns and climate – Resilience
- New supply chain considerations and changing dynamics in some industries
- Change in population – travel and transportation needs are shifting
- How can we strengthen E-W connections to improve network resilience?
- Needs of new renewable energy zones, minerals transportation



Planning investment & funding programs



Pipeline Prioritisation Criteria





Challenges

Growing theme is how to increase **journey resilience** of network

- Focus on the east-west crossings
- Developing communication strategies with our customers to provide information on disruptions / detours
- Working in partnership with local governments to consider whole of transport network, including increased investment in secondary routes to reconnect journeys

Challenges

Movement of **Over Size Over Mass** vehicles across network

- Investigating how we plan road investment to capture this
- In doing so, need to better understand what needs to be moved on network, and how industry can work with transport agencies to break down components where possible
- Acknowledge can be costly for projects as well as impacts to amenity in towns
- Renewable Energy Zone planning



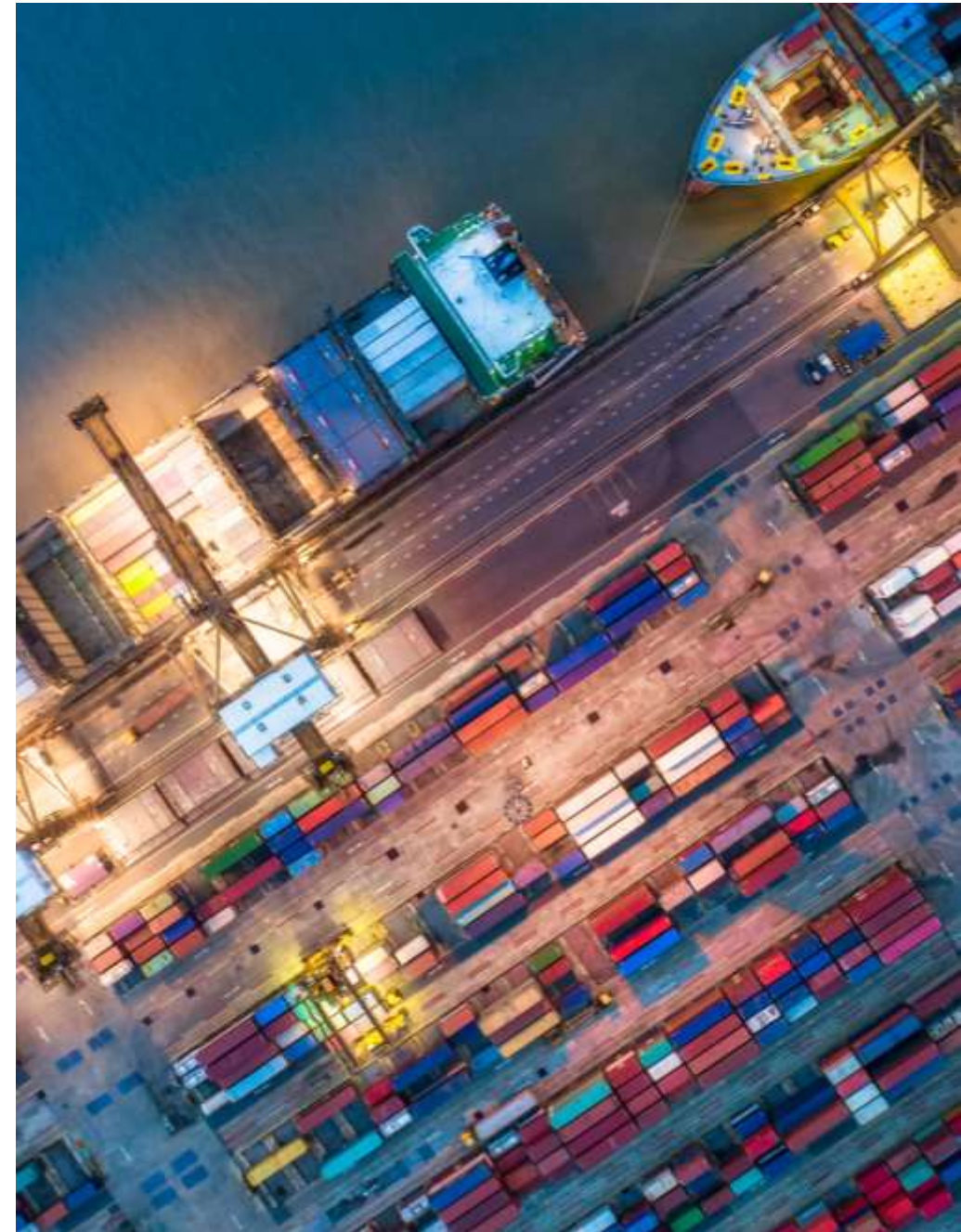
Future funding programs

- Heavy Vehicle Rest Stops
- Regional Rail
- Regional Roads



Freight Regional Forum

GRIFFITH



Q&A discussion

The Hon, Sam Faraway, MLC

Cr Doug Curran, Mayor of Griffith

Bianca Slack-Smith, TfNSW

Sam Knight, TfNSW

Adam Gray, TfNSW

QUESTIONS



The Hon. Sam Farrow, MLC

Minister for Regional Transport and Roads



Thank you for coming

